

# METAL ART



BLACK  
GREY  
TAUPE  
IVORY

**METAL ART**







# METAL ART



60x60 BLACK  
30x60 BLACK









# METAL ART



60x60 GREY  
30x60 BLACK  
10x30 GREY  
30x30 GREY MURETTO  
4x30 LONDON GREY  
ESAGONO INTARSIO GREY/BLACK 10x10









# METAL ART



60x60 TAUPE  
5x20 TAUPE









# METAL ART



60x60 IVORY  
ESAGONO INTARSIO IVORY/TAUPE 10x10  
IVORY MOSAICO KIOS MESH MOUNTED 30x30





# METAL ART

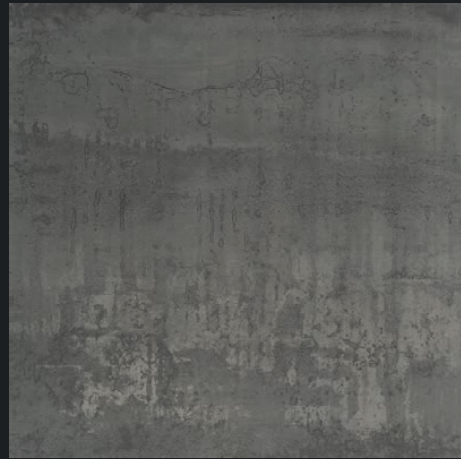


5x20 GREY

5x20 BLACK







040901  
METAL ART BLACK RETT.  
30x30 / 12"x12" COD.78 □



103061  
METAL ART BLACK RETT.  
10x30 / 4"x12" COD.79 □



050201  
METAL ART BLACK  
5x20 / 2"x8" (SFUSO) COD.93 □

606146  
METAL ART BLACK RETT.  
60x60 / 24"x24" COD.79 □

490445  
METAL ART BLACK RETT.  
30x60 / 12"x24" COD.76 □



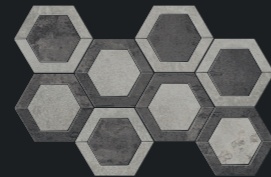
040905  
METAL ART BLACK 5x5  
MESH MOUNTED 30x30 / 12"x12"  
COD.22 ○



040909  
METAL ART BLACK MURETTO 2,4x10  
MESH MOUNTED 30x30 / 12"x12"  
COD.45 ○



040913  
METAL ART BLACK MOSAICO KIOS  
MESH MOUNTED 30x30 / 12"x12"  
COD.29 ○



390470  
METAL ART ESAGONO INTARSIO GREY / BLACK 10x10  
MESH MOUNTED 20x35 / 8"x14"  
COD.57 ○



310188  
METAL ART BLACK LONDON  
4x30 / 1,6"x12" COD.32 ○



380206  
METAL ART BLACK LISTELLO  
7,2x30 / 2,8"x12" COD.14 ○

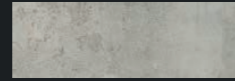
# BLACK



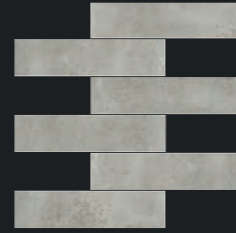




040903  
METAL ART GREY RETT.  
30x30 / 12"x12" COD.78 □



103063  
METAL ART GREY RETT.  
10x30 / 4"x12" COD.79 □



050203  
METAL ART GREY  
5x20 / 2"x8" (SFUSO) COD.93 □

606145  
METAL ART GREY RETT.  
60x60 / 24"x24" COD.79 □

490447  
METAL ART GREY RETT.  
30x60 / 12"x24" COD.76 □



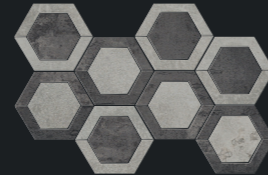
040907  
METAL ART GREY 5x5  
MESH MOUNTED 30x30 / 12"x12"  
COD.22 ○



040911  
METAL ART GREY MURETTO 2,4x10  
MESH MOUNTED 30x30 / 12"x12"  
COD.45 ○



040915  
METAL ART GREY MOSAICO KIOS  
MESH MOUNTED 30x30 / 12"x12"  
COD.29 ○



390470  
METAL ART ESAGONO INTARSIO GREY / BLACK 10x10  
MESH MOUNTED 20x35 / 8"x14"  
COD.57 ○



310190  
METAL ART GREY LONDON  
4x30 / 1,6"x12" COD.32 ○

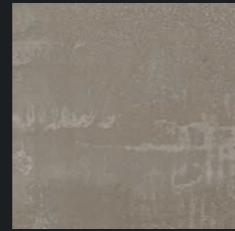
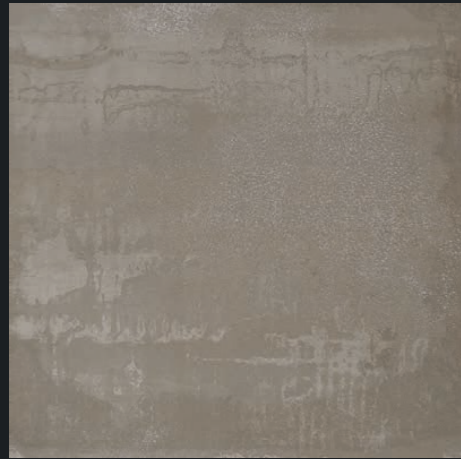


380208  
METAL ART GREY LISTELLO  
7,2x30 / 2,8"x12" COD.14 ○

# GREY







040904  
METAL ART TAUPE RETT.  
30x30 / 12"x12" COD.78 □



103064  
METAL ART TAUPE RETT.  
10x30 / 4"x12" COD.79 □



050204  
METAL ART TAUPE  
5x20 / 2"x8" (SFUSO) COD.93 □

606147  
METAL ART TAUPE RETT.  
60x60 / 24"x24" COD.79 □

490448  
METAL ART TAUPE RETT.  
30x60 / 12"x24" COD.76 □



040908  
METAL ART TAUPE 5x5  
MESH MOUNTED 30x30 / 12"x12"  
COD.22 ○



040912  
METAL ART TAUPE MURETTO 2,4x10  
MESH MOUNTED 30x30 / 12"x12"  
COD.45 ○



040916  
METAL ART TAUPE MOSAICO KIOS  
MESH MOUNTED 30x30 / 12"x12"  
COD.29 ○



390469  
METAL ART ESAGONO INTARSIO IVORY / TAUPE 10X10  
MESH MOUNTED 20x35 / 8"x14"  
COD.57 ○



310191  
METAL ART TAUPE LONDON  
4x30 / 1,6"x12" COD.32 ○

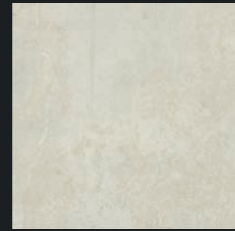
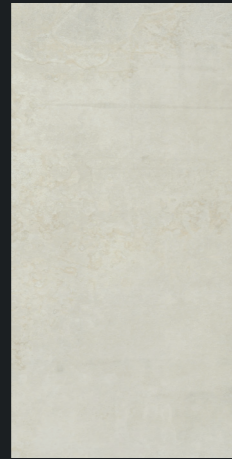


380209  
METAL ART TAUPE LISTELLO  
7,2x30 / 2,8"x12" COD.14 ○

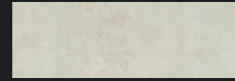
# TAUPE







040902  
METAL ART IVORY RETT.  
30x30 / 12"x12" COD.78 □



103062  
METAL ART IVORY RETT.  
10x30 / 4"x12" COD.79 □



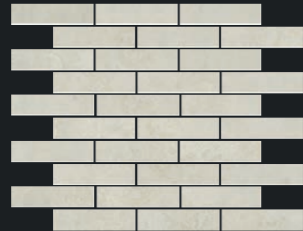
050202  
METAL ART IVORY  
5x20 / 2"x8" (SFUSO) COD.93 □

606144  
METAL ART IVORY RETT.  
60x60 / 24"x24" COD.79 □

490446  
METAL ART IVORY RETT.  
30x60 / 12"x24" COD.76 □



040906  
METAL ART IVORY 5x5  
MESH MOUNTED 30x30 / 12"x12"  
COD.22 ○



040910  
METAL ART IVORY MURETTO 2,4x10  
MESH MOUNTED 30x30 / 12"x12"  
COD.45 ○



040914  
METAL ART IVORY MOSAICO KIOS  
MESH MOUNTED 30x30 / 12"x12"  
COD.29 ○



390469  
METAL ART ESAGONO INTARSIO IVORY / TAUPE 10x10  
MESH MOUNTED 20x35 / 8"x14"  
COD.57 ○

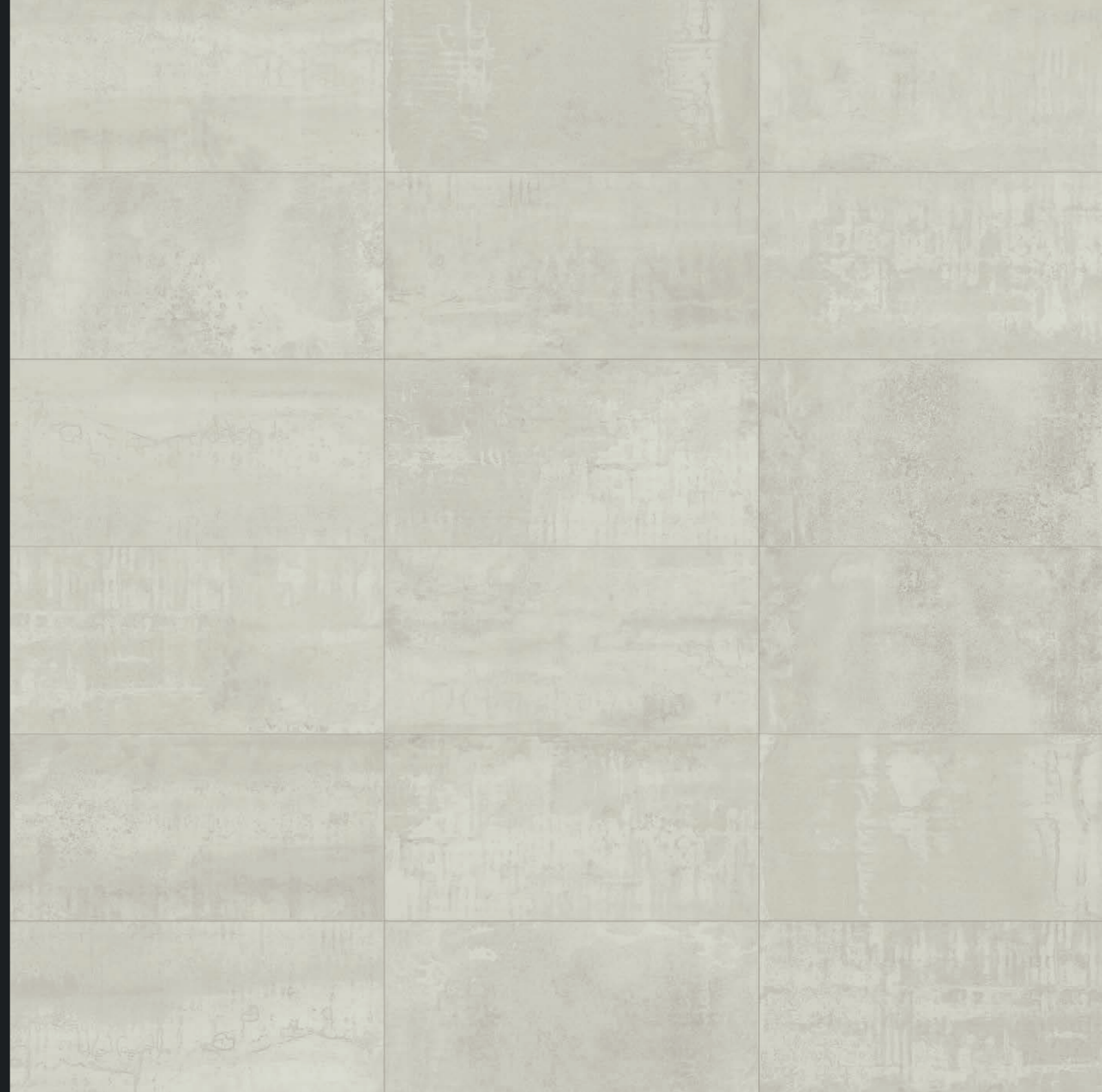


310189  
METAL ART IVORY LONDON  
4x30 / 1,6"x12" COD.32 ○



380207  
METAL ART IVORY LISTELLO  
7,2x30 / 2,8"x12" COD.14 ○

# IVORY





# METAL ART

PEZZI SPECIALI • SPECIAL TRIMS • PIÈCES SPÉCIALES • FORMSTÜCKE



290593  
METAL ART BLACK BATTISCOPIA 5x30  
COD. 17 △

290595  
METAL ART GREY BATTISCOPIA 5x30  
COD. 17 △

290594  
METAL ART IVORY BATTISCOPIA 5x30  
COD. 17 △

290596  
METAL ART TAUPE BATTISCOPIA 5x30  
COD. 17 △



490479  
METAL ART BLACK GRADINO 33x60  
COD. 112 ○

490480  
METAL ART GREY GRADINO 33x60  
COD. 112 ○

490481  
METAL ART IVORY GRADINO 33x60  
COD. 112 ○

490482  
METAL ART TAUPE GRADINO 33x60  
COD. 112 ○



290597  
METAL ART BLACK BATTISCOPIA 5x60  
COD. 22 △

290599  
METAL ART GREY BATTISCOPIA 5x60  
COD. 22 △

290598  
METAL ART IVORY BATTISCOPIA 5x60  
COD. 22 △

290600  
METAL ART TAUPE BATTISCOPIA 5x60  
COD. 22 △



490483  
METAL ART BLACK ANGOLARE 33x60  
COD. 107 ○

490484  
METAL ART GREY ANGOLARE 33x60  
COD. 107 ○

490485  
METAL ART IVORY ANGOLARE 33x60  
COD. 107 ○

490486  
METAL ART TAUPE ANGOLARE 33x60  
COD. 107 ○

## CERAMICA GAZZINI E L'AMBIENTE

In accordo con la norma ISO 1402 "Environmental labels and declarations" si dichiara che:  
L'azienda è impegnata nella continua innovazione tecnologica dei propri processi per realizzare prodotti sempre più rispondenti alle richieste del mercato e nell'ottica di:

- **riduzione del consumo energetico dei processi di produzione;**
  - **riduzione delle emissioni nell'aria e nell'acqua;**
  - **miglioramento dell'informazione al consumatore e della gestione dei rifiuti.**
- Per limitare il proprio impatto ambientale CERAMICA GAZZINI S.p.A. opera come di seguito descritto:
- **gli scarti di lavorazione sono completamente gestiti e riutilizzati;**
  - **tutti gli stabilimenti produttivi sono dotati di impianto di depurazione delle acque a circuito chiuso con recupero totale degli scarichi idrici provenienti dal ciclo produttivo e nessuno scarico in ambiente;**
  - **le emissioni gassose sono autorizzate dall'autorità competente, dotate di impianti per l'abbattimento degli inquinanti e sottoposte a controllo periodico per verifica del rispetto della legislazione vigente;**
  - **i rifiuti industriali sono smaltiti in conformità alle direttive comunitarie;**
  - **gli imballaggi sono destinati al recupero e riutilizzo;**
  - **l'impatto acustico nell'ambiente è attenuato con l'utilizzo di tecnologie idonee.**

Le piastrelle ceramiche prodotte sono:

- **un prodotto con una lunga durata di vita**
- **riciclabili al termine dell'utilizzo**

## CERAMICA GAZZINI AND THE ENVIRONMENT

In line with the ISO 14021 standard "Environmental labels and declarations" we declare that:  
The company is committed to the continued technological innovation of its processes to create products that increasingly meet the demands of the market and focus on:

- **reduced energy consumption in production processes;**
  - **reduced emissions into the air and water;**
  - **improving consumer awareness and waste management.**
- To curb its environmental impact, CERAMICA GAZZINI S.p.A. has taken the following steps:
- **manufacturing rejects are fully managed and reused;**
  - **all the production units are equipped with a closed-circuit water purification plant with total recovery of liquid discharges coming from the production cycle and no discharges into the environment;**
  - **emissions of gases are authorised by the competent authority, pollutant abatement systems are fitted and undergo periodic checks to verify they comply with the current laws;**
  - **industrial waste is disposed of in compliance with the community directives;**
  - **packaging is sent off to be recycled and reused;**
  - **the acoustic impact on the environment is toned down via the use of suitable technologies.**

The ceramic tiles produced are:

- **a long-lasting product**
- **recyclable at the end of their use**

CARATTERISTICHE DI QUALITÀ  
QUALITY CHARACTERISTICS  
CARACTÉRISTIQUES DE QUALITÉ  
QUALITÄTSEIGENSCHAFTEN

NORMA  
NORM  
NORME  
NORME

REQUISITO NORMA  
REQUIRED STANDARDS  
VALEUR PRESCRITE SELON LA NORME  
NORMVORGABE

RISULTATO  
RESULT  
RÉSULTAT  
ERGEBNISS

	Assorbimento d'acqua Water absorption of the body Absorption d'eau de support Wasseraufnahme des Scherbens	ISO 10545-3	≤ 0,5	0,1%
	Resistenza a flessione Breaking strenght Résistance à la flexion Biegefestigkeit	ISO 10545-4	≥ 35 N/mm <sup>2</sup>	47 N/mm <sup>2</sup>
	Resistenza all'abrasione Abrasion resistance Resistance a l'abrasion Abriebbeständigkeit	ISO 10545-7		PEI V Black PEI IV
	Resistenza al gelo Frost resistance Résistance au gel Frostbeständigkeit	ISO 10545-12	Nessun campione deve presentare rotture o alterazioni apprezzabili alla superficie No samples must show ruptures or noticeable surface alteration Aucuns enchantions doit présenter ruptures ou altérations appréciables de la surface Keines der Muster sollte Risse oder sichtbare Fehler der Oberflaeche zeigen	Conforme Conformity Conforme Gemäss
	Resistenza all'attacco chimico Chemical resistance Résistance à l'attaque chimique Beständigkeit gegen Chemikalien	ISO 10545-13	Nessun campione deve presentare alterazioni visibili all'attacco chimico No samples must show visible signs of chemical attack Aucuns enchantions doit présenter des altérations visibles à l'attaque chimique Keines der Muster sollte sehenswerte Aenderungen nach Behandlung mit Chemikalien zeigen	Conforme Conformity Conforme Gemäss
	Resistenza agli sbalzi termici Thermal shock resistance Resistance aux ecart de température Temperaturwechselbeständigkeit	ISO 10545-5		Conforme Conformity Conforme Gemäss
	Resistenza scivolosità Sliding resistance Resistance au glissement Rutschfestigkeit	DIN 51130 R		R9
	Coefficiente d'attrito (statico) Friction coefficient (static) Reibungskoeffizient (statische) Coefficient de friction (statique)	ASTM C 1028	> 0,6  ≥ 0,6	DRY > 0,6  WET > 0,6
	Moderata Variazione Moderate Variation Variation modérée maessige Abweichung			V3

□ = mq   ○ = pz   △ = ml

**PER UNA POSA OTTIMALE DEL PRODOTTO CONSIGLIAMO SEMPRE DI MESCOLARE ALMENO TRE SCATOLE DI MATERIALE.**

For the best product laying results, material from at least three boxes should be mixed.

Für eine optimale Verlegung des Erzeugnisses empfehlen wir stets, mindestens drei Packungen Material anzumischen.

Pour une pose excellente, nous recommandons toujours de mélanger le contenu d'au moins trois boîtes.



V1

Aspetto uniforme  
Uniform appearance  
Aspect uniforme  
einheitliches Aussehen



V2

Lieve Variazione  
Slight Variation  
Légère Variation  
geringe Abweichung



V3

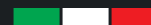
Moderata Variazione  
Moderate Variation  
Variation modérée  
maessige Abweichung



V4

Forte stonizzazione  
Substantial Variation  
Effet dénuancé très accentué  
akzentuierte Variation

MADE IN ITALY



mktg\_Gazzini

project\_www.digitalpuntoservice.it

photo\_www.puntoimagesrl.it

print\_Arti Grafiche Castello



GAZZINI  
CERAMICA & DESIGN

Ceramica Gazzini SpA - via Milano, 2 - 42048 Rubiera (Reggio Emilia) Italy  
Tel. 0522 628112 - 627518 - 628639 - Fax 0522 628437  
info@ceramicagazzini.it - www.ceramicagazzini.it

C.F. E P.I. 00140380353 - REG. IMP. REGGIO EMILIA N° 00140380353  
CAPITALE SOCIALE I.V. € 546.000,00