

METAL EFFECT

# PLATFORM

GAZZINI  
CERAMICA & DESIGN

METAL EFFECT

## PLATFORM

Sofisticata e dalla forte personalità, Platform è la nuova collezione in grés porcellanato effetto metallo caratterizzata da un'estetica contemporanea e una misurata riflessione della luce. Declinata come nota glam o come protagonista di spazi residenziali e commerciali, Platform può interpretare l'interior design con tono moderno o elegantemente classico. Come sempre nella migliore tradizione Made in Italy.

Sophisticated and with a strong personality, Platform is the new metal-effect porcelain stoneware collection with a contemporary look, featuring tasteful reflection of light. Used as a glamorous note or playing the dominant role in residential and commercial locations, Platform is ideal for modern or elegantly classic interior design. As always, in the best Made in Italy tradition.

Elegant und charakterstark, überzeugt die neue Kollektion Platform aus Feinsteinzeug in Metalloptik, die das Licht dezent reflektiert, durch ihre zeitgemäße Ästhetik. Ob als glamouröse Note oder tonangebendes Gestaltungselement im Wohn oder Objektbereich eignet sich Platform für die Umsetzung moderner oder klassisch eleganter Raumwelten. Wie immer in der besten Tradition des Made in Italy.

Sophistication et caractère affirmé : la nouvelle collection en grés cérame effet métal Platform se distingue par son esthétique contemporaine et sa réflexion mesurée de la lumière. Déclinée en note de glamour ou occupant une place prépondérante dans les espaces résidentiels et commerciaux, Platform interprète le design intérieur dans une veine moderne ou élégamment classique. Et ce, comme toujours, dans la plus pure tradition du « Made in Italy ».



Blue



Sage



Powder



Bronze

# Powder

## **Pavimento - Floor**

Powder Rett. 120x280 - 48"x110"

## **Rivestimento - Wall**

Powder Rett. 120x280 - 48"x110"







## Powder

**Pavimento - Floor**

Powder Rett. 60x60 - 24"x24"



# Sage

**Rivestimento - Wall**  
Sage Rett. 120x280 - 48"x110"

**Pavimento - Floor**  
Sage Rett. 60x120 - 24"x48"





# Sage

**Pavimento - Floor**

Sage Rett. 60x120 - 24"x48"







## Sage

**Pavimento - Floor**  
Sage Rett. 60x60 - 24"x24"

**Rivestimento - Wall**  
Mosaico Losanga 28x21,8 - 11"x8,5"







## Blue

**Pavimento - Floor**

Blue Rett. 10x60 - 4"x24"

**Rivestimento - Wall**

Blue Rett. 10x30 - 4"x12"

Mosaico Losanga 28x21,8 - 11"x8,5"





# Blue

**Pavimento - Floor**  
Blue Rett. 30x60 - 12"x24"



# Bronze

**Rivestimento - Wall**  
Bronze Rett. 120x280 - 48"x110"

**Pavimento - Floor**  
Bronze Rett. 60x120 - 24"x48"







## Bronze

**Pavimento - Floor**  
Bronze Rett. 30x60 - 12"x24"





# Powder

10mm



**601282**  
Platform Powder Rett.  
60x120 / 24"x48"  
Cod. **94** □



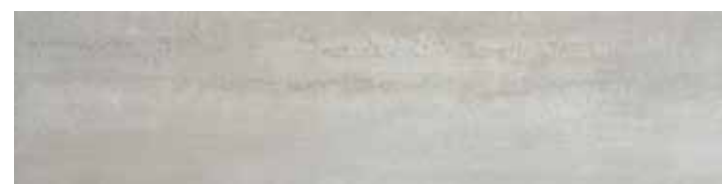
**606233**  
Platform Powder Rett.  
60x60 / 24"x24"  
Cod. **79** □



**106024**  
Platform Powder Rett.  
10x60 / 4"x24"  
Cod. **83** □



**103127**  
Platform Powder Rett.  
10x30 / 4"x12"  
Cod. **77** □



**301254**  
Platform Powder Rett.  
30x120 / 12"x48"  
Cod. **99** □

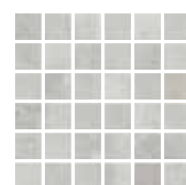


**490693**  
Platform Powder Rett.  
30x60 / 12"x24"  
Cod. **76** □



**050233**  
Platform Powder Rett.  
5x20 / 2"x8"  
Cod. **93** □

## Decori | Decors | Decors | Dekorationen



**041254**  
Platform Powder  
Mosaico 5x5 su rete  
30x30/ 12"x12"  
Cod. **24** ○



**041281**  
Platform Powder  
Mosaico Losanga  
28x21,8 / 11"x8,5"  
Cod. **71** ○



**041305**  
Platform Powder  
Mosaico Frame 2,5x7,5 su rete  
30x30/ 12"x12"  
Cod. **24** ○

## Grande Lastra | Big Slab 120x280

6mm



**120282**  
Platform Powder Rett.  
120x280 / 48"x110"  
Cod. **112** □

6mm



**121211**  
Platform Powder Rett.  
120x120 / 48"x48"  
Cod. **106** □

□ = mq  
○ = pz  
△ = ml

## Pezzi speciali | Special trims | Pièces spéciales | Formstücke

10mm

### Battiscopa



**290772**  
Platform Powder  
5x30 / 2"x12"  
Cod. **116** △

**290776**  
Platform Powder  
5x60 / 2"x24"  
Cod. **121** △

**290780**  
Platform Powder  
5x120 / 2"x48"  
Cod. **33** △

### Gradino



**490697**  
Platform Powder  
33x60 / 13"x24"  
Cod. **112** △

**490705**  
Platform Powder  
33x120 / 13"x48"  
Cod. **114** △

### Angolare



**490701**  
Platform Powder  
33x60 / 13"x24"  
Cod. **107** △

**490709**  
Platform Powder  
33x120 / 13"x48"  
Cod. **110** △



# Sage

10mm



**601283**  
Platform Sage Rett.  
60x120 / 24"x48"  
Cod. **94** □

**606234**  
Platform Sage Rett.  
60x60 / 24"x24"  
Cod. **79** □

**106025**  
Platform Sage Rett.  
10x60 / 4"x24"  
Cod. **83** □

**103128**  
Platform Sage Rett.  
10x30 / 4"x12"  
Cod. **77** □

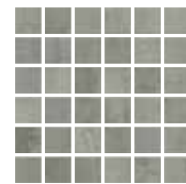


**301255**  
Platform Sage Rett.  
30x120 / 12"x48"  
Cod. **99** □

**490694**  
Platform Sage Rett.  
30x60 / 12"x24"  
Cod. **76** □

**050234**  
Platform Sage Rett.  
5x20 / 2"x8"  
Cod. **93** □

## Decori | Decors | Decors | Dekorationen



**041255**  
Platform Sage  
Mosaico 5x5 su rete  
30x30 / 12"x12"  
Cod. **24** ○

**041282**  
Platform Sage  
Mosaico Losanga  
28x21,8 / 11"x8,5"  
Cod. **71** ○

**041306**  
Platform Sage  
Mosaico Frame 2,5x7,5 su rete  
30x30 / 12"x12"  
Cod. **24** ○

# Grande Lastra | Big Slab

6mm



**120283**  
Platform Sage Rett.  
120x280 / 48"x110"  
Cod. **112** □

6mm



**121212**  
Platform Sage Rett.  
120x120 / 48"x48"  
Cod. **106** □

## Pezzi speciali | Special trims | Pièces spéciales | Formstücke

10mm

### Battiscopa



**290773**  
Platform Sage  
5x30 / 2"x12"  
Cod. **116** △

**290777**  
Platform Sage  
5x60 / 2"x24"  
Cod. **121** △

**290781**  
Platform Sage  
5x120 / 2"x48"  
Cod. **33** △

### Gradino



**490698**  
Platform Sage  
33x60 / 13"x24"  
Cod. **112** △

**490706**  
Platform Sage  
33x120 / 13"x48"  
Cod. **114** △

### Angolare



**490702**  
Platform Sage  
33x60 / 13"x24"  
Cod. **107** △

**490710**  
Platform Sage  
33x120 / 13"x48"  
Cod. **110** △

□ = mq  
○ = pz  
△ = ml



# Blue



**601280**  
Platform Blue Rett.  
60x120 / 24"x48"  
Cod. **94** □



**606231**  
Platform Blue Rett.  
60x60 / 24"x24"  
Cod. **79** □



**106022**  
Platform Blue Rett.  
10x60 / 4"x24"  
Cod. **83** □



**103125**  
Platform Blue Rett.  
10x30 / 4"x12"  
Cod. **77** □



**301252**  
Platform Blue Rett.  
30x120 / 12"x48"  
Cod. **99** □

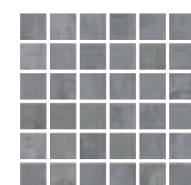


**490691**  
Platform Blue Rett.  
30x60 / 12"x24"  
Cod. **76** □



**050231**  
Platform Blue Rett.  
5x20 / 2"x8"  
Cod. **93** □

## Decori | Decors | Decors | Dekorationen



**041252**  
Platform Blue  
Mosaico 5x5 su rete  
30x30 / 12"x12"  
Cod. **24** ○



**041279**  
Platform Blue  
Mosaico Losanga  
28x21,8 / 11"x8,5"  
Cod. **71** ○



**041303**  
Platform Blue  
Mosaico Frame 2,5x7,5 su rete  
30x30 / 12"x12"  
Cod. **24** ○

10mm

## Grande Lastra | Big Slab

120x280



**120280**  
Platform Blue Rett.  
120x280 / 48"x110"  
Cod. **112** □

6mm



**121209**  
Platform Blue Rett.  
120x120 / 48"x48"  
Cod. **106** □

6mm

□ = mq  
○ = pz  
△ = ml

## Pezzi speciali | Special trims | Pièces spéciales | Formstücke

10mm

### Battiscopa



**290770**  
Platform Blue  
5x30 / 2"x12"  
Cod. **116** △

**290774**  
Platform Blue  
5x60 / 2"x24"  
Cod. **121** △

**290778**  
Platform Blue  
5x120 / 2"x48"  
Cod. **33** △

### Gradino



**490695**  
Platform Blue  
33x60 / 13"x24"  
Cod. **112** △

**490703**  
Platform Blue  
33x120 / 13"x48"  
Cod. **114** △

### Angolare



**490699**  
Platform Blue  
33x60 / 13"x24"  
Cod. **107** △

**490707**  
Platform Blue  
33x120 / 13"x48"  
Cod. **110** △



# Bronze

10mm



**601281**  
Platform Bronze Rett.  
60x120 / 24"x48"  
Cod. **94** □



**606232**  
Platform Bronze Rett.  
60x60 / 24"x24"  
Cod. **79** □



**106023**  
Platform Bronze Rett.  
10x60 / 4"x24"  
Cod. **83** □



**103126**  
Platform Bronze Rett.  
10x30 / 4"x12"  
Cod. **77** □



**301253**  
Platform Bronze Rett.  
30x120 / 12"x48"  
Cod. **99** □

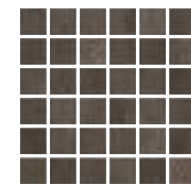


**490692**  
Platform Bronze Rett.  
30x60 / 12"x24"  
Cod. **76** □



**050232**  
Platform Bronze Rett.  
5x20 / 2"x8"  
Cod. **93** □

## Decori | Decors | Decors | Dekorationen



**041253**  
Platform Bronze  
Mosaico 5x5 su rete  
30x30/ 12"x12"  
Cod. **24** ○



**041280**  
Platform Bronze  
Mosaico Losanga  
28x21,8 / 11"x8,5"  
Cod. **71** ○



**041304**  
Platform Bronze  
Mosaico Frame 2,5x7,5 su rete  
30x30/ 12"x12"  
Cod. **24** ○

## Grande Lastra | Big Slab

120x280

6mm



**120281**  
Platform Bronze Rett.  
120x280 / 48"x110"  
Cod. **112** □

6mm



**121210**  
Platform Bronze Rett.  
120x120 / 48"x48"  
Cod. **106** □

□ = mq  
○ = pz  
△ = ml

## Pezzi speciali | Special trims | Pièces spéciales | Formstücke

10mm

### Battiscopa



**290771**  
Platform Bronze  
5x30 / 2"x12"  
Cod. **116** △

**290775**  
Platform Bronze  
5x60 / 2"x24"  
Cod. **121** △

**290779**  
Platform Bronze  
5x120 / 2"x48"  
Cod. **33** △

### Gradino



**490696**  
Platform Bronze  
33x60 / 13"x24"  
Cod. **112** △

**490704**  
Platform Bronze  
33x120 / 13"x48"  
Cod. **114** △

### Angolare



**490700**  
Platform Bronze  
33x60 / 13"x24"  
Cod. **107** △

**490708**  
Platform Bronze  
33x120 / 13"x48"  
Cod. **110** △





**Pavimento - Floor**  
Platform Blue Rett. 5x20 - 2''x8''

# PLATFORM

Caratteristiche di qualità Quality characteristics Caractéristiques de qualité Qualitätseigenschaften	Norma Norm Norme Norme	Requisito norma Required standards Valeur prescrite selon la norme Normvorgabe	Risultato Result Résultat Ergebniss
Assorbimento d'acqua Water absorption of the body Absorption d'eau de support Wasseraufnahme des Scherbens	ISO 10545-3	≤ 0,5%	Conforme Conformity Conforme Gemäss
Resistenza a flessione Breaking strength Résistance à la flexion Biegefestigkeit	ISO 10545-4	≥ 35 N/mm <sup>2</sup>	Conforme Conformity Conforme Gemäss
Resistenza all'abrasione Abrasion resistance Resistance a l'abrasion Abriebbeständigkeit	EN ISO 10545-7	Powder	PEI V
		Blue - Bronze - Sage	PEI IV
Resistenza al gelo Frost resistance Résistance au gel Frostbeständigkeit		Nessun campione deve presentare rotture o alterazioni apprezzabili alla superficie No samples must show ruptures or noticeable surface alteration Aucuns enchantions doit présenter ruptures ou altérations appréciables de la surface Keines der Muster sollte Risse oder sichtbare Fehler der Oberfläche zeigen	Conforme Conformity Conforme Gemäss
Resistenza all'attacco chimico Chemical resistance Résistance à l'attaque chimique Beständigkeit gegen Chemikalien	ISO 10545-13		GA GLA
Resistenza agli sbalzi termici Thermal shock resistance Resistance aux écarts de température Temperaturwechselbeständigkeit	ISO 10545-5		Conforme Conformity Conforme Gemäss
Resistenza scivolosità Sliding resistance Resistance au glissement Rutschfestigkeit	DIN 51130 R		R10
Coefficiente d'attrito dinamico Wet dynamic coefficient of friction Coefficient de friction dynamique Reibungskoeffizient Schlupfrigkeit (in Bewegung)	Bot 3000 E	DCOF ≥ 0,42	> 0,42
Moderata variazione Moderate variation Variation modérée Maessige abweichung			V3



## CERAMICA GAZZINI S.P.A. e l'ambiente

In accordo con la norma ISO 1402 "Environmental labels and declarations" si dichiara che: L'azienda è impegnata nella continua innovazione tecnologica dei propri processi per realizzare prodotti sempre più rispondenti alle richieste del mercato e nell'ottica di:

- riduzione del consumo energetico dei processi di produzione;
- riduzione delle emissioni nell'aria e nell'acqua;
- miglioramento dell'informazione al consumatore e della gestione dei rifiuti.

Per limitare il proprio impatto ambientale CERAMICA GAZZINI S.p.A. opera come di seguito descritto:

- gli scarti di lavorazione sono completamente gestiti e riutilizzati;
- tutti gli stabilimenti produttivi sono dotati di impianto di depurazione delle acque a circuito chiuso con recupero totale degli scarichi idrici provenienti dal ciclo produttivo e nessuno scarico in ambiente;
- le emissioni gassose sono autorizzate dall'autorità competente, dotate di impianti per l'abbattimento degli inquinanti e sottoposte a controllo periodico per verifica del rispetto della legislazione vigente;
- i rifiuti industriali sono smaltiti in conformità alle direttive comunitarie;
- gli imballaggi sono destinati al recupero e riutilizzo;
- l'impatto acustico nell'ambiente è attenuato con l'utilizzo di tecnologie idonee.

Le piastrelle ceramiche prodotte sono:

- un prodotto con una lunga durata di vita
- riciclabili al termine dell'utilizzo

## CERAMICA GAZZINI S.P.A. and the environment

In line with the ISO 14021 standard "Environmental labels and declarations" we declare that: The company is committed to the continued technological innovation of its processes to create products that increasingly meet the demands of the market and focus on:

- reduced energy consumption in production processes;
- reduced emissions into the air and water;
- improving consumer awareness and waste management.

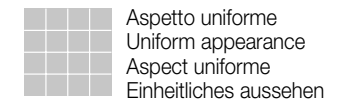
To curb its environmental impact, CERAMICA GAZZINI S.p.A. has taken the following steps:

- manufacturing rejects are fully managed and reused;
- all the production units are equipped with a closed-circuit water purification plant with total recovery of liquid discharges coming from the production cycle and no discharges into the environment;
- emissions of gases are authorised by the competent authority, pollutant abatement systems are fitted and undergo periodic checks to verify they comply with the current laws;
- industrial waste is disposed of in compliance with the community directives;
- packaging is sent off to be recycled and reused;
- the acoustic impact on the environment is toned down via the use of suitable technologies.

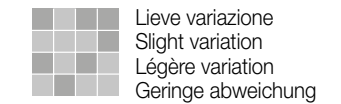
The ceramic tiles produced are:

- a long-lasting product
- recyclable at the end of their use

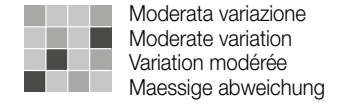
### V1



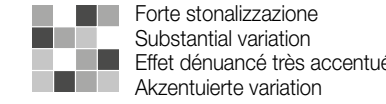
### V2



### V3



### V4



**Per una posa ottimale del prodotto consigliamo sempre di mescolare almeno tre scatole di materiale.**

For the best product laying results, material from at least three boxes should be mixed.

Für eine optimale Verlegung des Erzeugnisses empfehlen wir stets, mindestens drei Packungen Material anzumischen.

Pour une pose excellente, nous recommandons toujours de mélanger le contenu d'au moins trois boîtes.

Made in Italy





GAZZINI  
CERAMICA & DESIGN

Ceramica Gazzini SpA - via Milano, 2 - 42048 Rubiera (Reggio Emilia) Italy  
Tel. 0522 628112 - 627518 - 628639 - Fax 0522 628437  
info@ceramicagazzini.it - www.ceramicagazzini.it

C.F. E P.I. 00140380353 - REG. IMP. REGGIO EMILIA N° 00140380353  
CAPITALE SOCIALE I.V. € 546.000,00

